

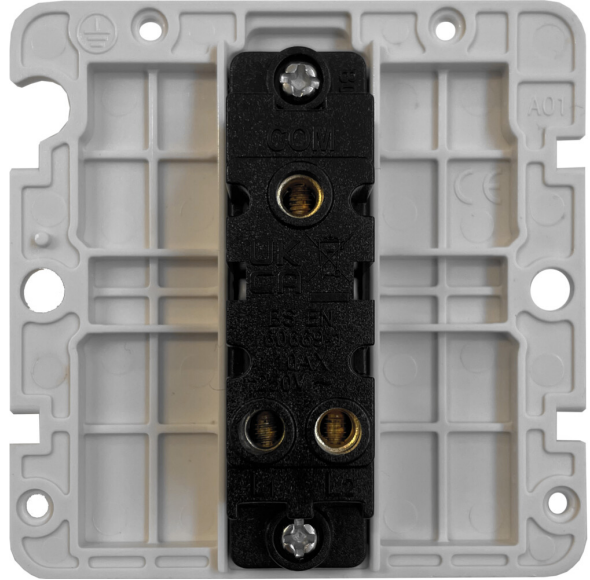
# G+H Electrical Accessories



## Technical Datasheet

**Description:** Polished Chrome Light Switch (White Switch/1 Gang)

**Part Number:** CC1W



## Information

<b>Plate Dimensions (mm)</b>	85 (W) x 85 (H) x 8 (D)
<b>Insert Material</b>	Polycarbonate
<b>Earth Strap</b>	Mild Steel
<b>Operating Voltage(AC)</b>	250V @ 50Hz
<b>Termination Type</b>	Screw
<b>Warranty</b>	10 years
<b>Product Class 1</b>	Must be earthed
<b>Maintenance</b>	Clean with a soft cloth only. Do not use a cleaning agent of any description.
<b>Style</b>	Rounded Profile
<b>Plate Material</b>	Chrome Plated Solid Brass, Hand-finished, Lacquered
<b>Switch Material</b>	Polycarbonate
<b>Required back box depth</b>	16mm
<b>Load Rating</b>	10A
<b>Switch type</b>	Single pole, 2 way
<b>Terminal Capacity</b>	4 x 1.0mm <sup>2</sup> , 4 x 1.5mm <sup>2</sup> , 2 x 2.5mm <sup>2</sup> , 1 x 4.0mm <sup>2</sup>
<b>Standards</b>	BS EN 60669-1
<b>IP Rating</b>	IP2XD