

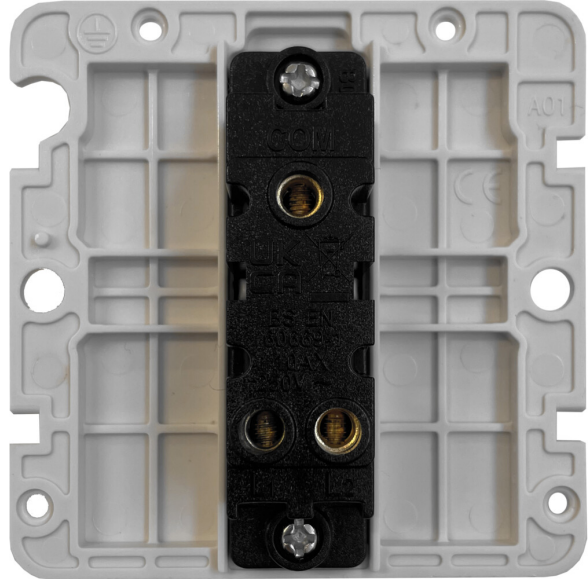
G+H Electrical Accessories



Technical Datasheet

Description: Flat Polished Chrome Light Switch (1 Gang/White Switch)

Part Number: FC1W



Information

Plate Dimensions (mm)	86 (W) x 86 (H) x 2 (D)
Insert Material	Polycarbonate
Earth Strap	Mild Steel
Operating Voltage(AC)	250V @ 50Hz
Termination Type	Screw
Warranty	10 years
Product Class 1	Must be earthed
Maintenance	Clean with a soft cloth only. Do not use a cleaning agent of any description.
Style	Flat Profile
Plate Material	Chrome Plated Solid Brass, Hand-finished, Lacquered
Switch Material	Polycarbonate
Required back box depth	25mm
Load Rating	10A
Switch type	Single pole, 2 way
Terminal Capacity	4 x 1.0mm ² , 4 x 1.5mm ² , 2 x 2.5mm ² , 1 x 4.0mm ²
Standards	BS EN 60669-1
IP Rating	IP2XD